

CAPTAIN HARBOR FRIDAY NIGHT SERIES

Presented by:
BHC, IHYC, OGYC, RYC



2013 Sailing Instructions

- Rules** This series will be governed by the Racing Rules of Sailing, the YRALIS Non-spinnaker Rules and by these sailing instructions. Crew weight restrictions imposed by a boat's 2013 YRALIS PHRF certificate may be disregarded.
- Schedule** This series will consist of four races with post-race parties to follow: June 7th Riverside Yacht Club, June 21st Indian Harbor Yacht Club, July 5th Belle Haven Club, July 19th Old Greenwich Yacht Club.
- Eligibility** All boats shall register on-line at: www.yachtscore.com or by visiting the Indian Harbor Yacht Club website (www.indianharboryc.org) or the Riverside Yacht Club website (www.riversideyc.org). The entry fee is \$10.00. Boats not registered will be assigned a rating of -99 and scored accordingly.
- Teams** Three boat teams can be declared using the supplemental form (found on the www.yachtscore.com event page) no later than June 6, 2013.
- Sails** No spinnakers, gennikers or bloopers. No more than one sail at a time in the fore triangle except during a seaman-like sail change. Whisker poles or spinnaker poles may be used. When in use, it shall be attached to the foremost mast.
- Communication** The Race Committee will monitor and communicate on VHF channel 72. In the event Code Flag Lima is hoisted from the Signal Boat accompanied by one sound signal prior to the warning signal, the Race Committee may amend these sailing instructions orally on the water.
- Start/Finish** The start/finish line shall be between a white or yellow flag on the Signal Boat and a nearby mark. The start/finish area will be located approximately 200 yards south of Red Rock buoy. When starting, the Signal Boat is to be left to starboard and the starting mark to port. When finishing, the finish is in the direction of the last mark. The Race Committee may reposition the finish line to square the line to the course.
- Divisions**
- | | | |
|--------------|-------------------|----------------------------|
| Division I | Numeral Pennant 1 | 88 and lower (PHRF rating) |
| Division II | Numeral Pennant 2 | 89 to 132 |
| Division III | Numeral Pennant 3 | 133 and higher |
- Starting Sequence** Starting signals will be in accordance with RRS 26.

| | | | |
|--------------|-------|----------------------|--|
| | ≈1854 | - pay attention - | A series of short blasts |
| Division I | 1855 | Division Warning | 1 sound – raise Division Flag(s) |
| | 1856 | Division Preparation | 1 sound – raise P, I, Z, Z with I, or black flag |
| | 1859 | | 1 sound - drop P, I, Z, Z with I, or black flag |
| | 1900 | Division start | 1 sound - drop Division Flag(s) |
| Division II | 1900 | Warning | 1 sound – raise Division Flag(s) |
| | 1901 | Preparation | 1 sound – raise P, I, Z, Z with I, or black flag |
| | 1904 | | 1 sound - drop P, I, Z, Z with I, or black flag |
| | 1905 | Division start | 1 sound - drop Division Flag(s) |
| Division III | 1905 | Warning | 1 sound – raise Division Flag |
| | 1906 | Preparation | 1 sound – raise P, I, Z, Z with I, or black flag |
| | 1909 | | 1 sound - drop P, I, Z, Z with I, or black flag |
| | 1910 | Division Start | 1 sound - drop Division Flag |

Signals Individual Recall Code flag X White with blue cross One horn signal

| | | | |
|----------------|------------------|--------------------------|---------------------|
| General Recall | First Substitute | Yellow and blue triangle | Two horn signals |
| Postponement | Answer Pennant | Red and white stripes | Two horn signals. |
| Abandonment | Code flag N | Blue and white checks | Three horn signals. |
| Shorten Course | Code flag S | White with blue square | Two horn signals |

Courses

Pre-configured courses will be signaled from the Signal Boat by a letter beneath the division placard. A division whose placard is not displayed shall sail the same course as the previously displayed division.

See [Race Courses Table](#) for the courses. Marks are in the current “YRA Connecticut Area One-Design Championships Sailing Instructions” including “Marks and Exceptions” shown on the chart (set forth below).

| Course | Marks | Leave all Marks to... |
|--------|-----------|-----------------------|
| A | B X | Port |
| B | B V X | Port |
| C | B X B X | Port |
| D | AV | Port |
| E | A V W | Port |
| F | A W A W | Port |
| G | P L | Starboard |
| H | UL | Starboard |
| I | UP | Port |
| J | U P X U | Port |
| K | ULTUL | Starboard |
| L | HA | Port |
| M | L V | Port |
| N | L P | Port |
| O | L P V | Port |
| P | X B | Port |
| Q | X P | Port |
| R | X B T B | Port |
| S | X L B T B | Port |
| T | X B X B | Port |
| U | WA | Port |
| V | W V A | Starboard |
| W | V L | Starboard |
| X | V P L | Starboard |
| Y | V L V L | Starboard |
| Z | AH | Starboard |

Time Limit

2100 for all divisions.

Scoring

Corrected times will be based on time-on-time allowances using the YRALIS PHRF non-spinnaker ratings. The Time Correction Factor (TCF) for Time-on-Time scoring will be derived from the PHRF Handicaps using the US Sailing recommended equation of “ $TCF = A / (B + PHRF)$ ” with $A = 650$ and $B = 550$. The Low Point Scoring System, RRS A4 will apply except that, if less than three races are completed, each boat’s total score will be the sum of her scores (if three or four races are sailed, each boat’s score shall exclude her single worst score). Boats that do not compete in a given race shall be awarded points equal to the number of boats in her division that started that race plus one. Boats scored TLE shall be awarded points equal to the number of boats in her division that finished within the time limit plus two. One race constitutes a series.

Protests

The penalty available under RRS 44 for a boat that may have broken a rule of Part 2 shall be a One-Turn Penalty consisting of a tack and a jibe taken at the time of the incident. This changes RRS 44.1. Boats shall report any protest, and any penalty turns taken, to the Race Committee when they finish. Protests shall be written on forms available at each club, and submitted to the Front Desk of the sponsoring club within one hour of the Race

Committee Boat having docked (submit to Race Committee if sponsor is OGYC). All protests will initially be arbitrated within the next hour (or as soon as possible) after filing at the sponsoring club. The Protest Arbitration Penalty shall be the 20% Scoring Penalty as described in RRS 44.3(c). When a protest is not resolved by arbitration, a hearing will immediately follow, unless re-scheduled to a later date for the mutual convenience of the participants.

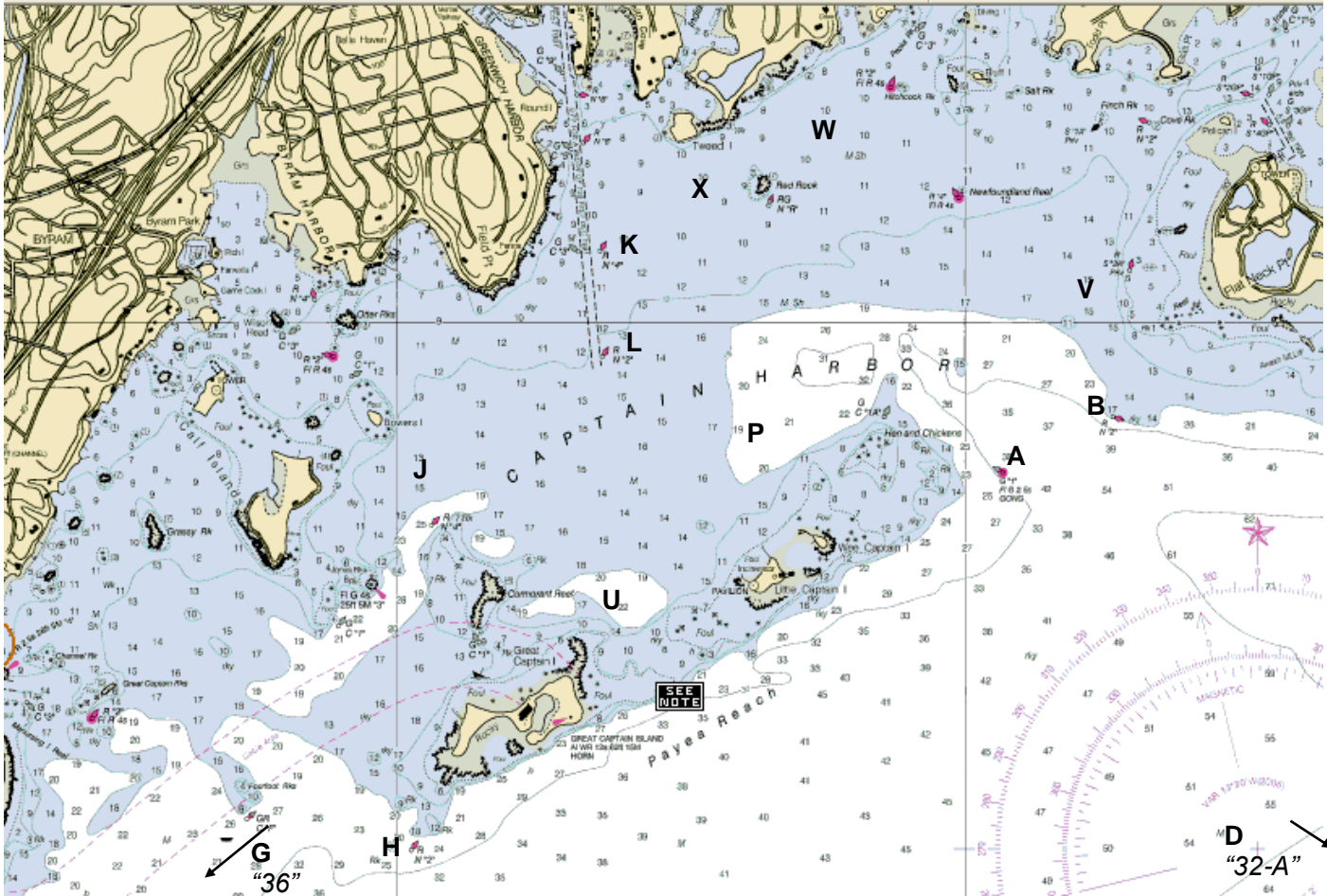
Safety

It is the responsibility of skippers and crew to wear US Coast Guard approved life jackets whenever conditions warrant. Furthermore, as a condition of participation in any race, the owner and crew agree that the safety of the boat and her crew and the decision whether or not to start or continue a race is solely their responsibility.

Prizes

Prizes 1st through 3rd will be awarded in each division.

Racing Area & Marks



Marks of the course include:

- | | |
|--|---|
| A - Bell "1" (flasher) – Little Capt. Is. E. Reef | Q - Special mark approximately ¼ mile to leeward of the start |
| B - Red Nun "2" – Flat Neck Point | S - Special mark approx. ¾ mile to windward of start. |
| D - Red Gong "32-A" – Mid-Sound buoy | T - The starting mark, if other than a lettered mark |
| G - Red Bell "36" – Bluefish Shoal | U - Special Indian Harbor YC mark NNE of Great Captain Is. |
| H - Red Nun "2" – Great Captain Island, West Reef | V - Special RYC mark southwest of Sugar Boat reef |
| J - Special Indian Harbor mark off Calf Island | W - Special RYC mark ¼ mi ENE of Red Rock |
| K - Red Nun "4" – Greenwich Harbor | X - Special Indian Harbor YC mark SW of Tweed Is. |
| L - Red Nun "2" – Greenwich Harbor | Y - Special mark approx. ½ mile to windward of start. |
| M - Special reaching mark, positioned on an extension of the starting line | Z - Special mark approx. 1 mile to windward of start. |
| N - Special mark, approximately ½ mile to leeward of the starting line | |
| P - Special RYC mark north of Wee Captain Is. | |

Exceptions:

Government marks shall be passed on the channel side unless used as a mark of the course, with the following exceptions:

- 1) Marks D, K and L may be passed on either side at the discretion of the skipper when not used as a turning mark
- 2) Can C-3, west of Mark K, may be disregarded and left on either hand
- 3) The channel between Cormorant Reef and Great Captain Island shall not be used
- 4) Red Rock buoy and Newfoundland Reef buoy shall be passed on the south side
- 5) Hen & Chickens buoy 1A and Cormorant Reef Red Nun "4" shall be passed on the north side

- 6) The passage between Great Captain & Little Captain Islands shall not be used